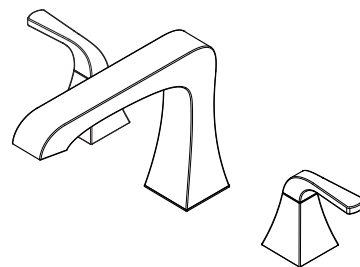


## Vorena™ Roman Tub Trim

806-VOCC Finish(CC) ☐

806-VOKK Finish(KK) ☐



## Specifications

### Features

- 13 GPM at 60 PSI Flow Rate
- All Metal Construction
- PVD Finish (KK Finish Only)
- TiteSeal™ Putty-Less Design
- Includes Roman Tub 3-Hole Rough-In Valve
- Accommodates up to 4.5" of Deck Thickness with Extension Kit
- Includes 15" Quick Connect Hose for Valve Connection

- 3-Hole Installation
- Adjustable Install
- Pforever Seal Ceramic Disc Valve
- Concealed Set Screws
- Fixed Hub
- High Arc Spout
- Mounting Hardware Included
- Preset Installation Depth
- Pforever Warranty®

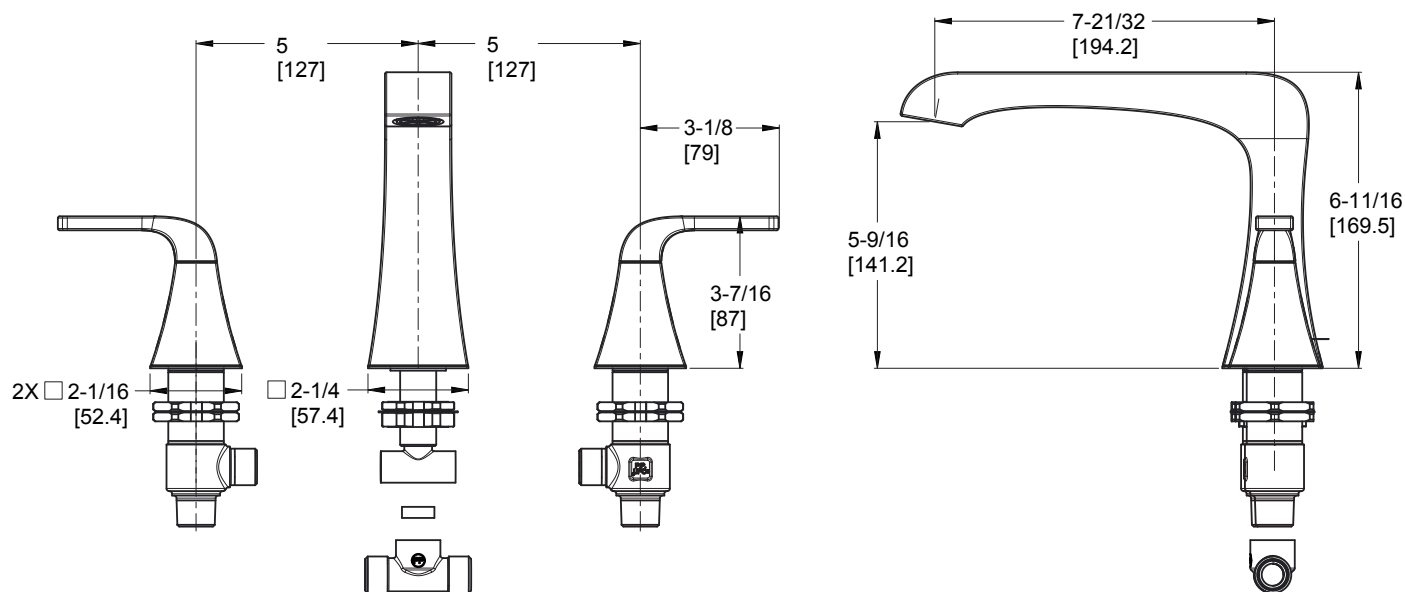
### Code Compliance

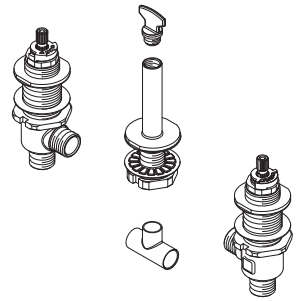
Pfister products are designed and manufactured in compliance with the following standards and codes:

- IAPMO Certified
- ASME A112.18.1
- ADA Compliant-ANSI A117.1 (Lever handles only)



## Dimensions





## Specifications

### Features

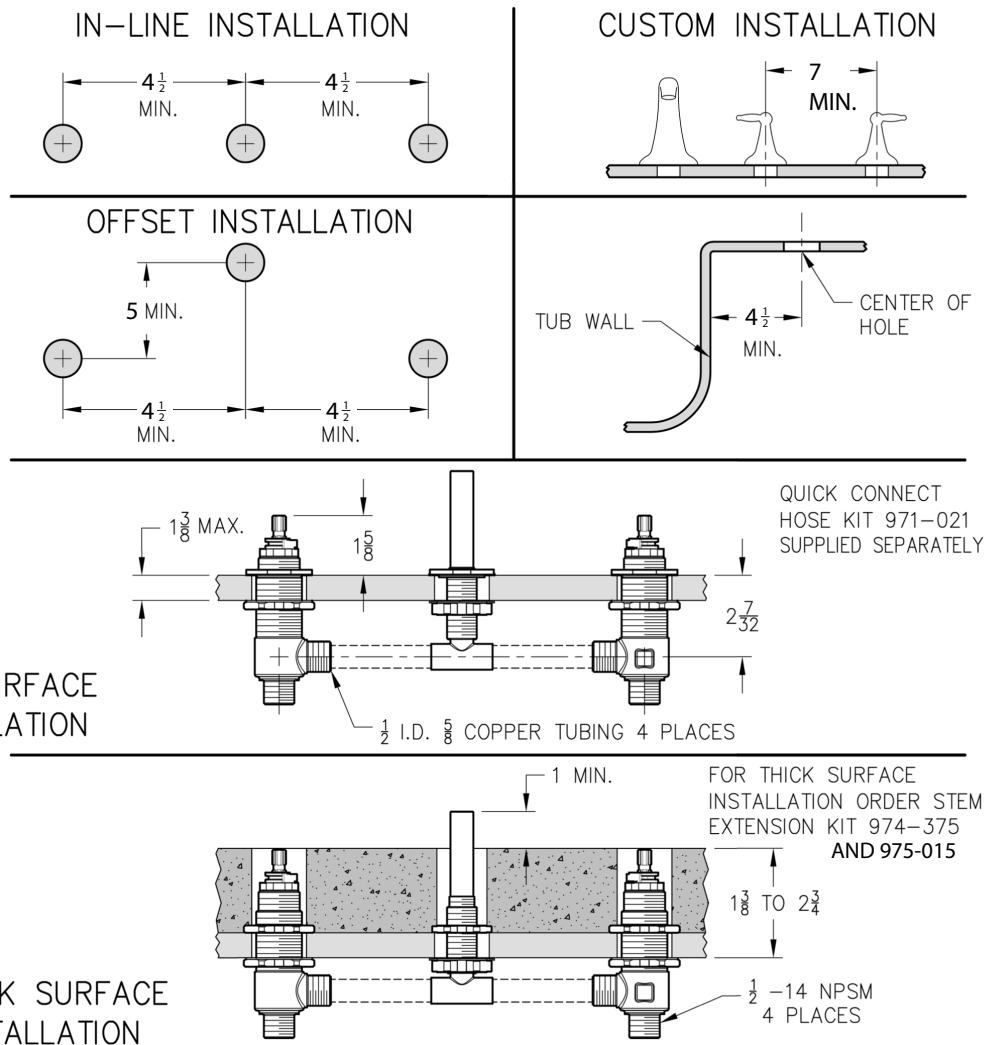
- Dual 1/2" I.P. or 1/2" Copper Sweat Connections
- Flexible Installation Options
- Pforever Seal Ceramic Disc Valves
- For 3-Hole Roman Tub Faucets
- 3-Hole Installation
- 15-18 GPM at 60 PSI
- Includes Inlet Line Test Plug
- Loose Body
- Reversible Hot or Cold Valves
- Valve Only
- Pforever Warranty®

### Code Compliance

Pfister products are designed and manufactured in compliance with the following standards and codes:

- IAPMO Certified
- ASME A112.18.1

## Dimensions



Min. Hole Size-Ø1-1/4 DIA