

Specifications

- 360° Rotating Spout
- Push & Seal™ Pop-Up

Features

- 2.2 GPM Flow Rate
- 360° Rotating Spout
- Adjustable Install
- All Metal Construction
- High Arc Spout
- Mounting Hardware Included
- Mounting Posts Included
- Pfaster Connect
- Side Spray Included
- Pforever Seal Ceramic Disc Valves
- Pforever Warranty®

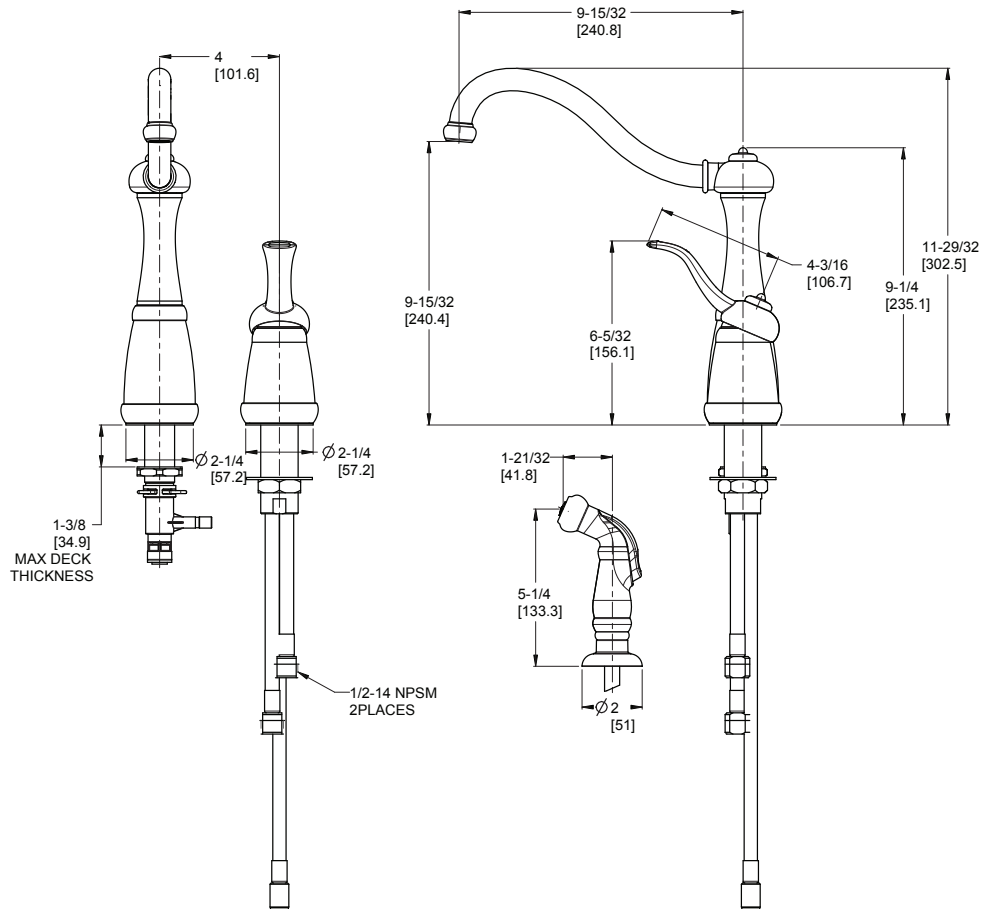
Code Compliance

Pfister products are designed and manufactured in compliance with the following standards and codes:

- IAPMO Certified
- CSA B125 Certified
- ASME A112.18.1
- NSF 61/9 Annex G (Low lead)
- ADA Compliant-ANSI A117.1 (Lever handles only)



Dimensions



Ø1 Min to Ø1-1/2 Max. Deck Hole Openings