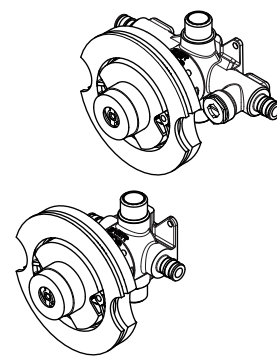


JX8-410P Finish(XX) ☐

JX8-440P Finish(XX) ☐



- Single Handle
- Valve Only
- 1/2" Cold PEX Inlets

Specifications

Features

- Back-to-Back Installation
- Cold Expansion PEX Inlets, 1/2 inch Universal Outlets
- OX8 Valve; Pressure Balancing Valve Prevents Hot Water Scalds & Cold Water Shocks
- OX8 Valve; Pressure Balancing; Maintains Temperature with Changes in Water Pressure
- Includes Copper Sweat Plug
- Spool Pressure Balance Valve
- Integral Stops (440P Only)
- Pforever Seal Ceramic Disc Valve
- Pforever Warranty®

Code Compliance

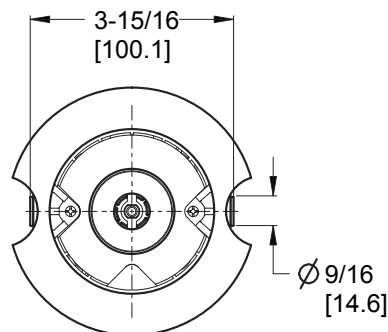
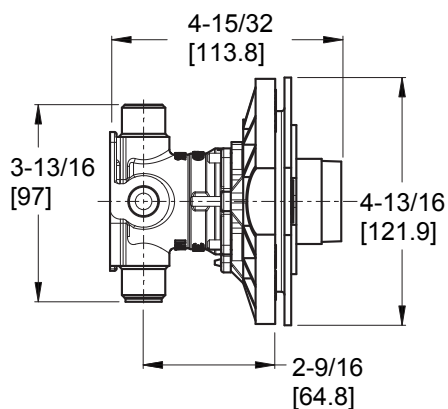
Pfister products are designed and manufactured in compliance with the following standards and codes:



- IAPMO Certified to ASME A112.18.1/CSA B125.1 including:
 - ASTM 1960 Standard
 - ADA Compliant-ANSI A117.1 (Lever handles only)

Dimensions

JX8-410P



JX8-440P

