

Specifications

Features

- 1.8 GPM Flow Rate
- 1, or 2-Hole Installation; Deck Plate or Single Hole Mounting Option
- Pfaster Connect™
- Concealed Sprayhead
- 360° Rotating Swivel Spout
- AutoDock™ Sprayhead Docking
- 2 Function Pull-Down Sprayer
- Forward Handle Operation
- Mounting Hardware Included
- Pforever Seal™ Ceramic Disc Valve
- Limited Lifetime Warranty



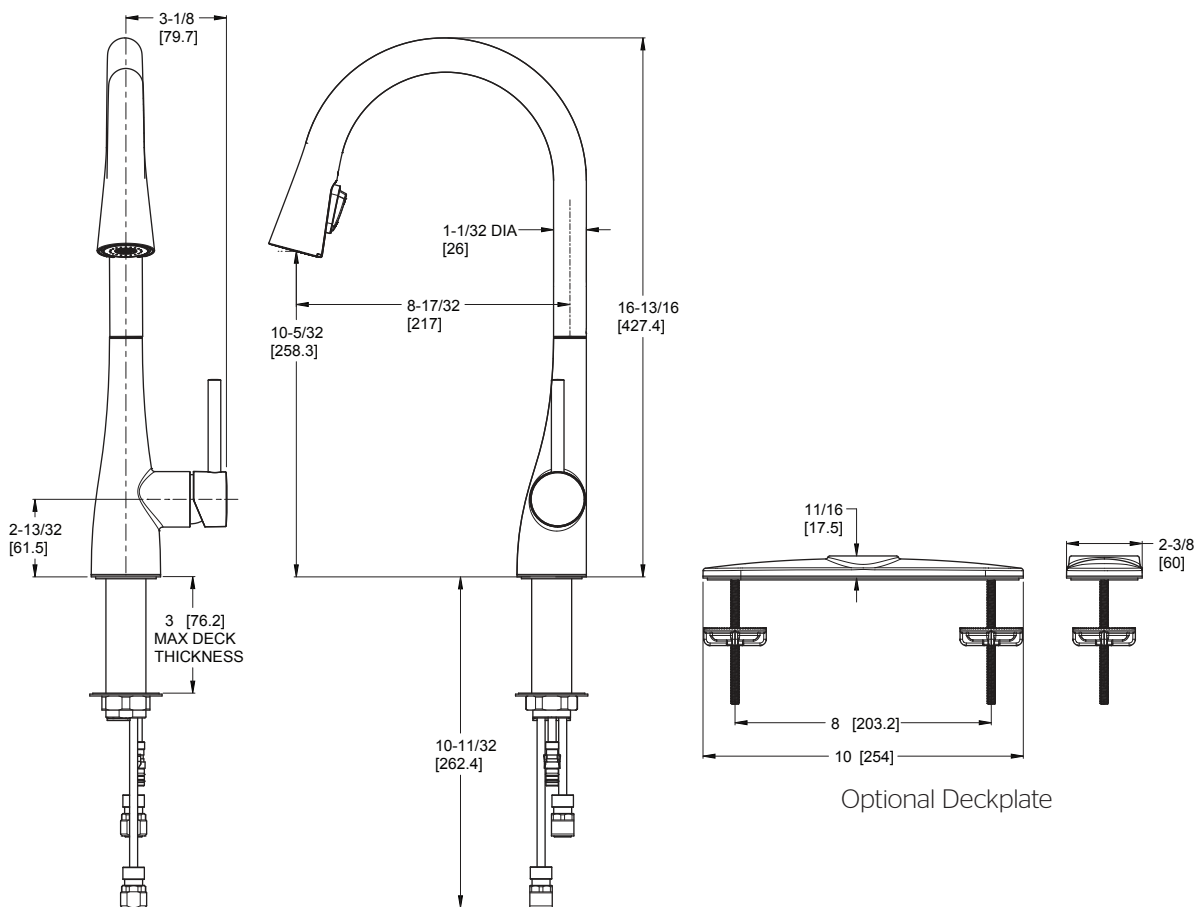
Code Compliance

Pfister products are designed and manufactured in compliance with the following standards and codes:

- IAPMO Certified to ASME A112.18.1/CSA B125.1 including:
 - ASME A112.18.3 (Backflow Prevention)
- NSF/ANSI/CAN61:Q≤1
- CEC Certified/CALGreen compliant
- ADA Compliant - ANSI A117.1 (Lever Handle Only)



Dimensions



Ø1-3/8 Min to Ø1-1/2 Max. Deck Hole Openings