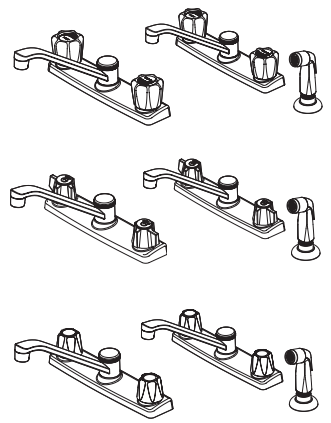


- | | |
|--|--|
| 135-1000 Finish(PC) <input type="checkbox"/> | 135-2000 Finish(PC) <input type="checkbox"/> |
| 135-100S Finish(SS) <input type="checkbox"/> | 135-4000 Finish(PC) <input type="checkbox"/> |
| 135-1100 Finish(PC) <input type="checkbox"/> | 135-4100 Finish(PC) <input type="checkbox"/> |
| | 135-5000 Finish(PC) <input type="checkbox"/> |



Specifications

Features

- 2.2 GPM Flow Rate
- Acrylic Windsor® Handles (1100 & 4100 Only)
- Blade Handles (2000 & 5000 Only)
- Includes Metal Supply Nuts
- 3-Hole Installation (100*, 1100, & 2000 Only)
- 4-Hole Installation (4000, 4100, & 5000 Only)
- White Side Spray (4000, 4100, & 5000 Only)
- Washerless Valves
- Pforever Warranty®

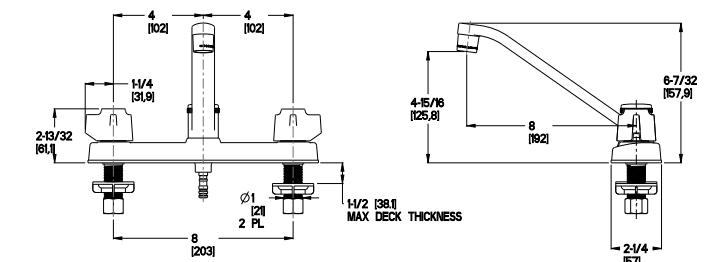
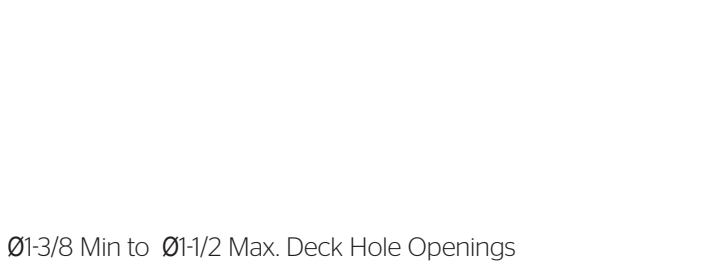
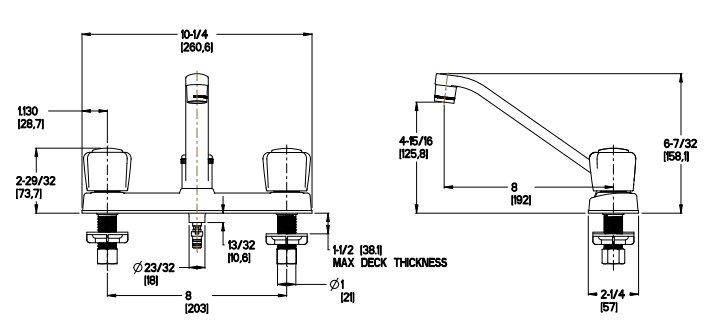
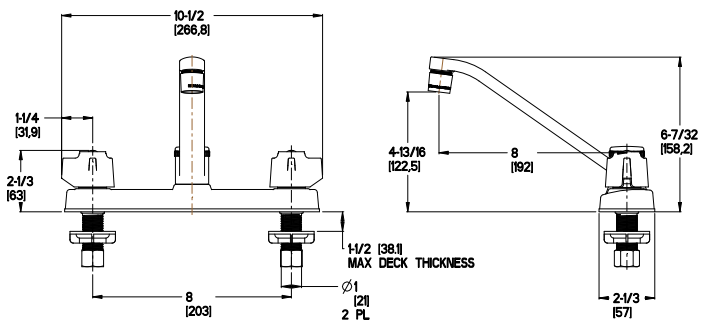
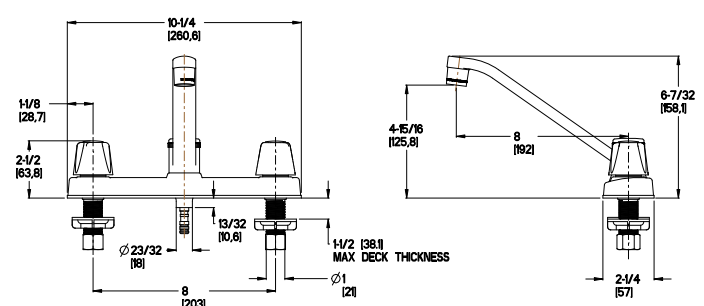
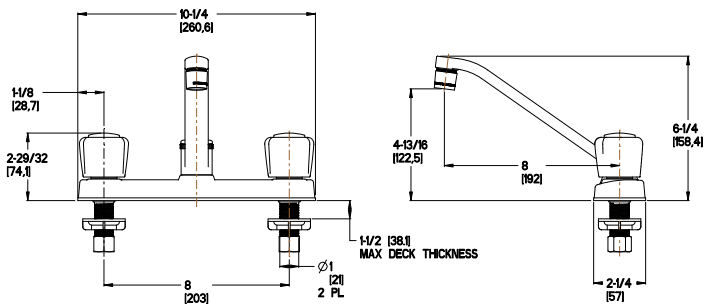
Code Compliance

Pfister products are designed and manufactured in compliance with the following standards and codes:

- IAPMO Certified
- CSA B125 Certified
- ASME A112.18.1
- ADA Compliant-ANSI A117.1 (Lever handles only) (5000 Only)



Dimensions



Ø1-3/8 Min to Ø1-1/2 Max. Deck Hole Openings